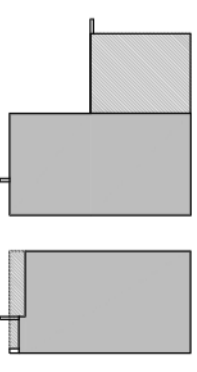
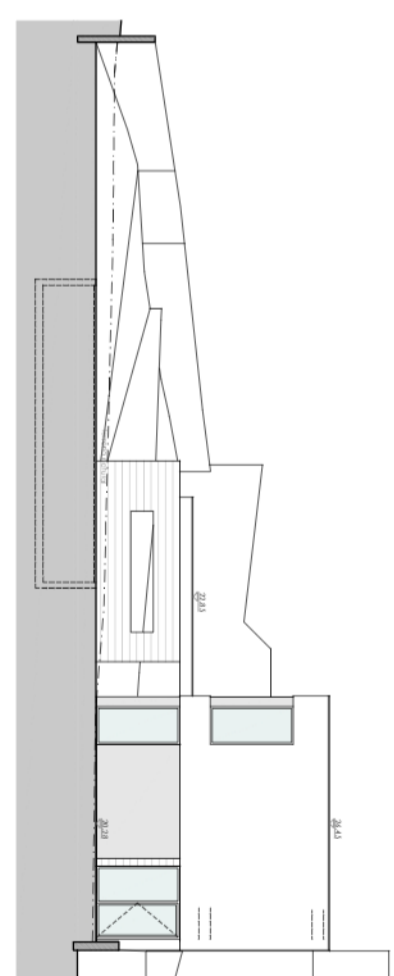
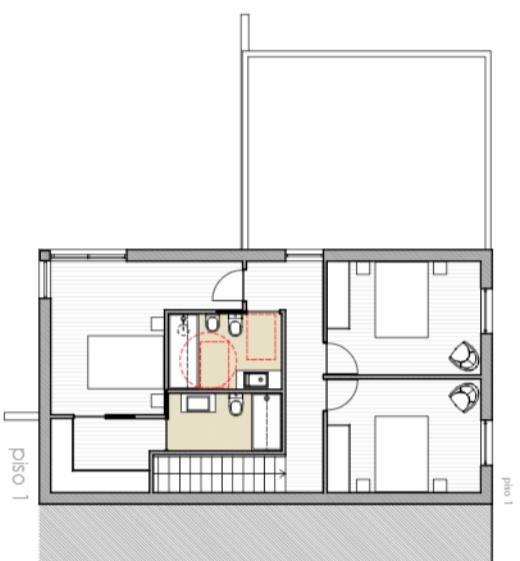


# CHIOMA

PERAFITA V2.2

habitação unifamiliar  
tipologia T3



ÁREA HABITAÇÃO  
155m<sup>2</sup>

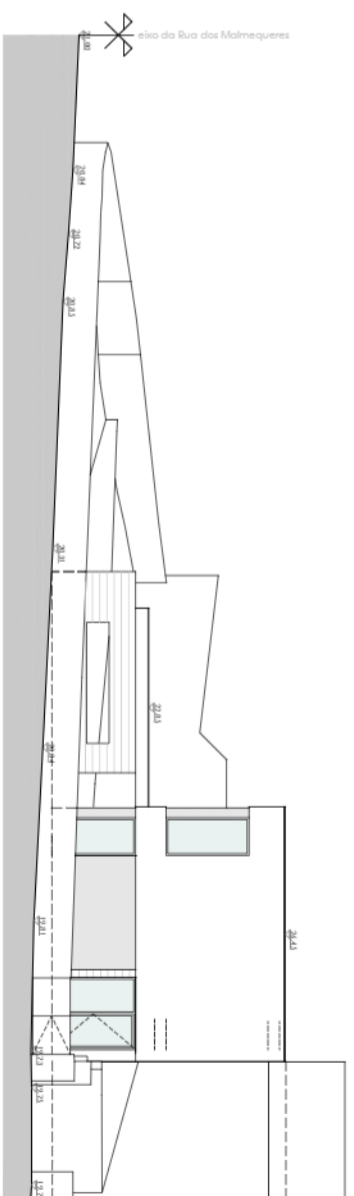
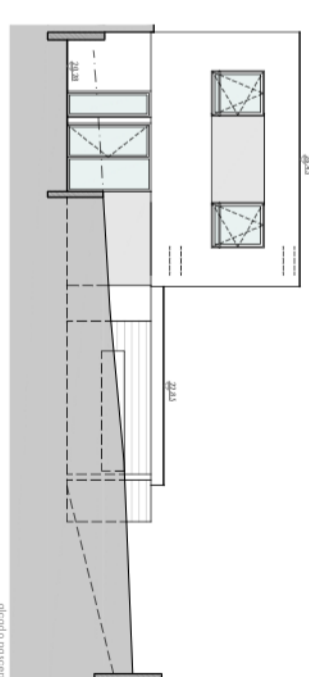
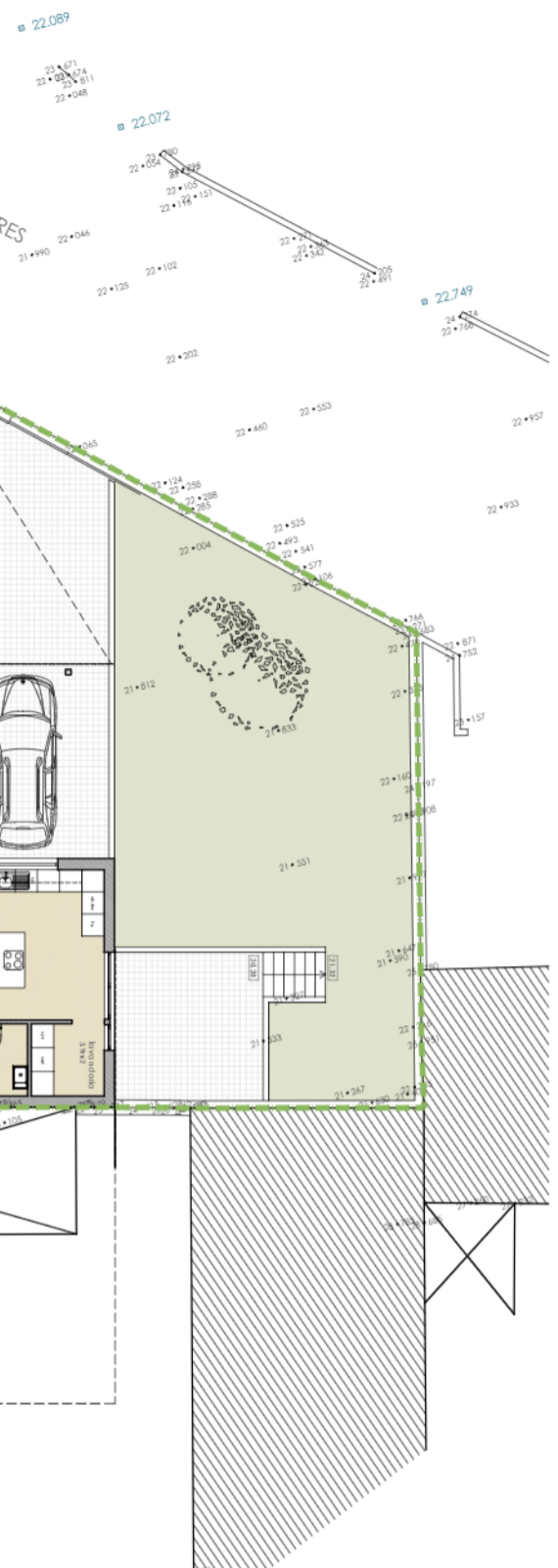
ÁREA PISO 0  
75m<sup>2</sup>

ÁREA PISO 1  
80m<sup>2</sup>

ÁREA DE ALPENDRE  
33m<sup>2</sup>

ÁREA COB. EXT.  
6m<sup>2</sup>

ÁREA DE DECK  
27m<sup>2</sup>



esc. 1:200  
setembro 2019

01

ARQUITECTURA

fernando lalia



miguel lima amorim

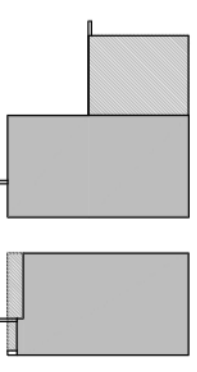
CONSTRUÇÃO



# CHIOMA

PERAFITA V2.2

habitação unifamiliar  
tipologia T3



ÁREA HABITAÇÃO  
155m<sup>2</sup>

ÁREA PISO 0  
75m<sup>2</sup>

ÁREA PISO 1  
80m<sup>2</sup>

ÁREA DE ALPENDRE  
33m<sup>2</sup>

ÁREA COB. EXT.  
6m<sup>2</sup>

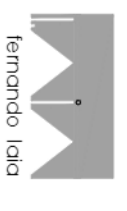
ÁREA DE DECK  
27m<sup>2</sup>

esc. 1:100

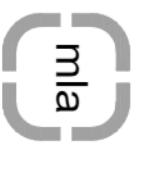
02

setembro 2019

ARQUITECTURA



fernando lala

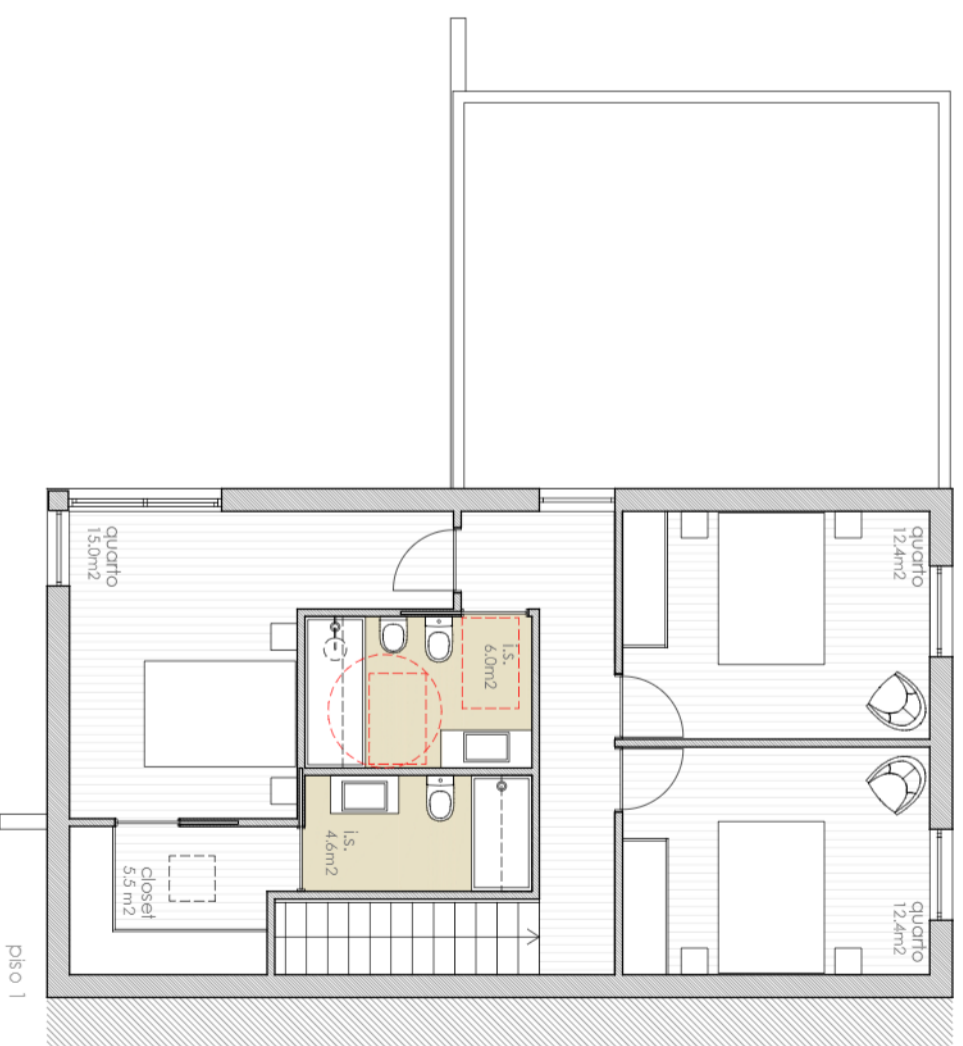
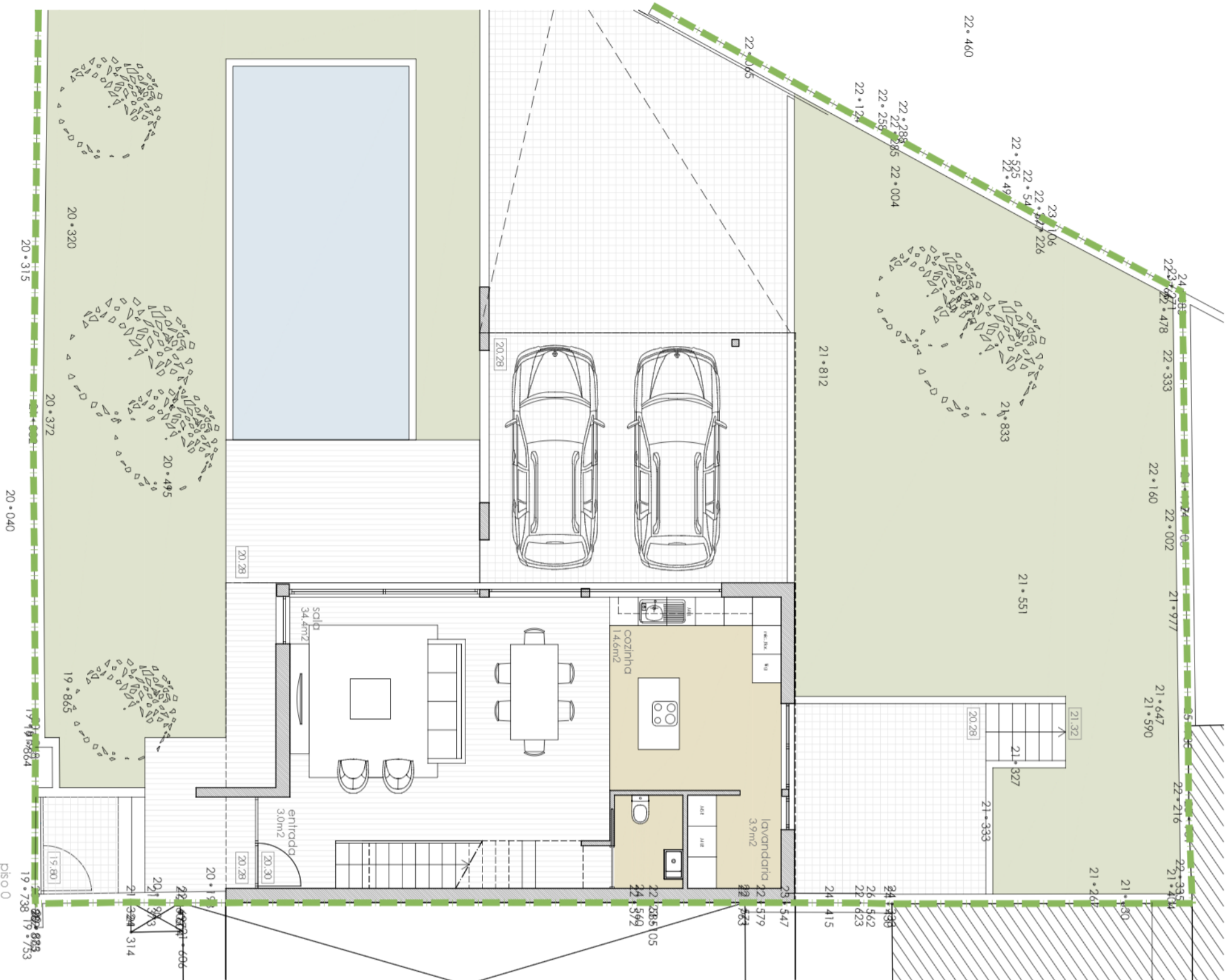


miguel lima amorim

CONSTRUÇÃO



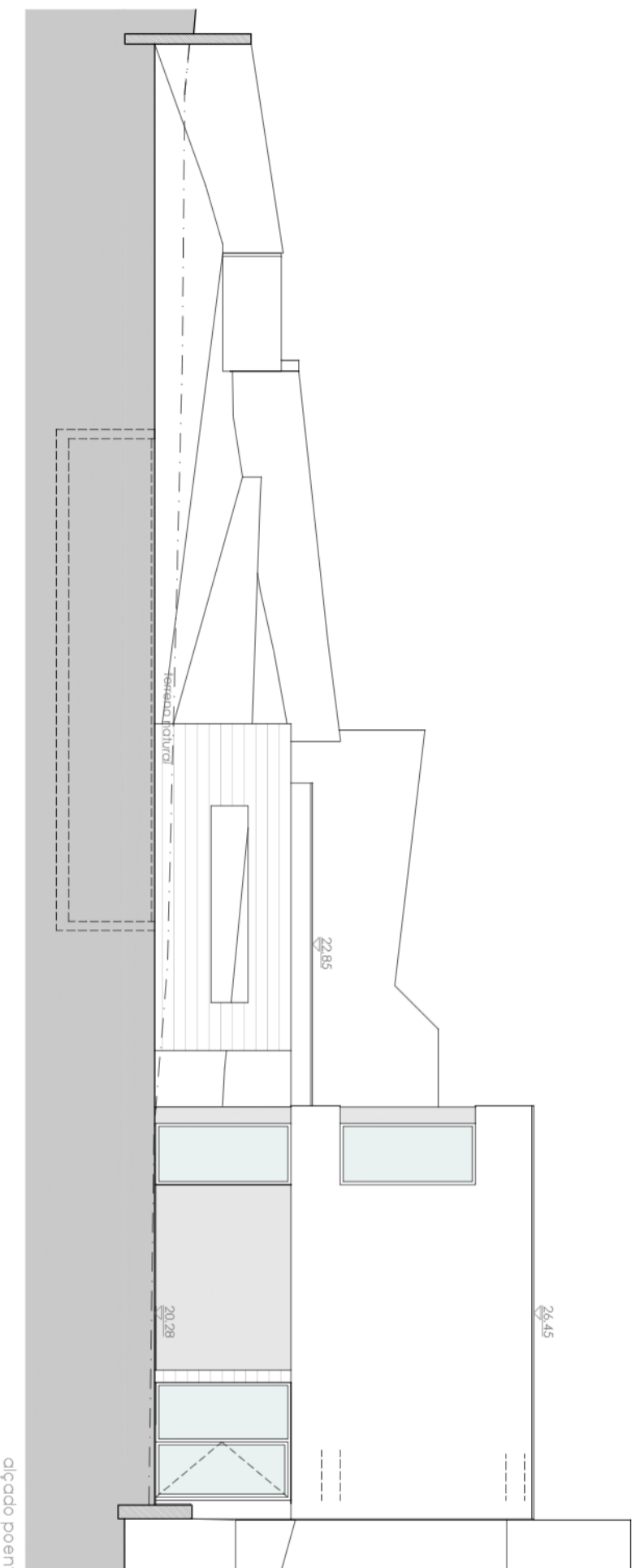
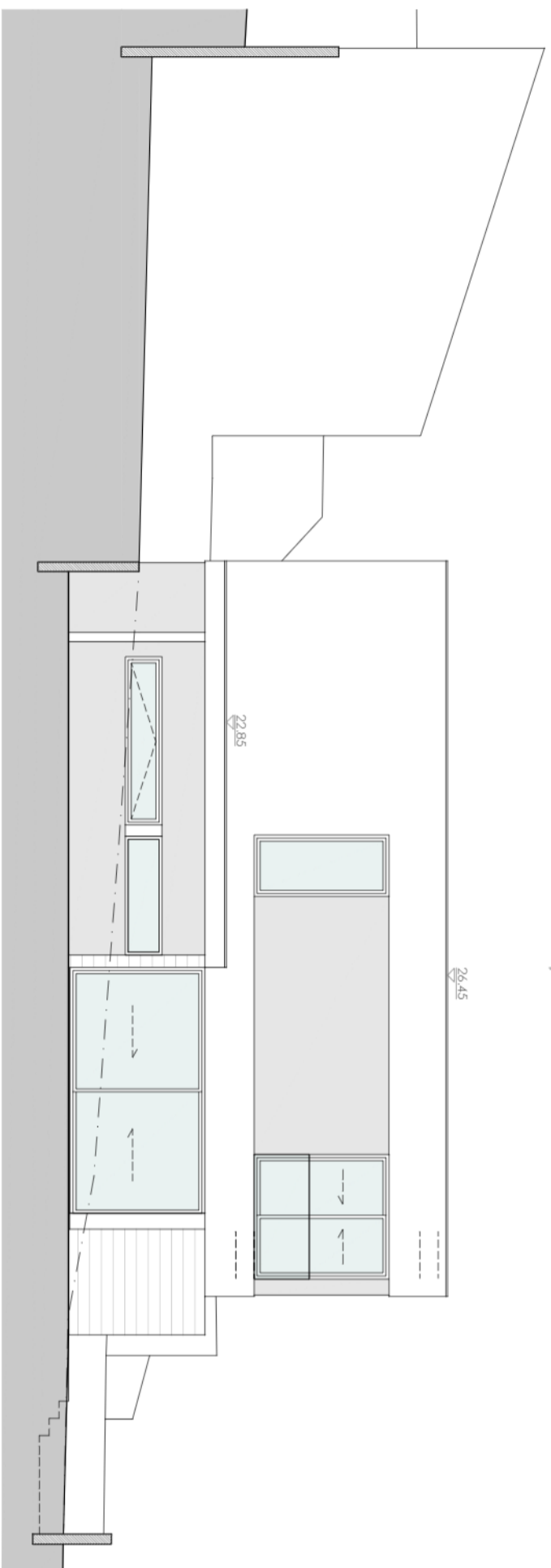
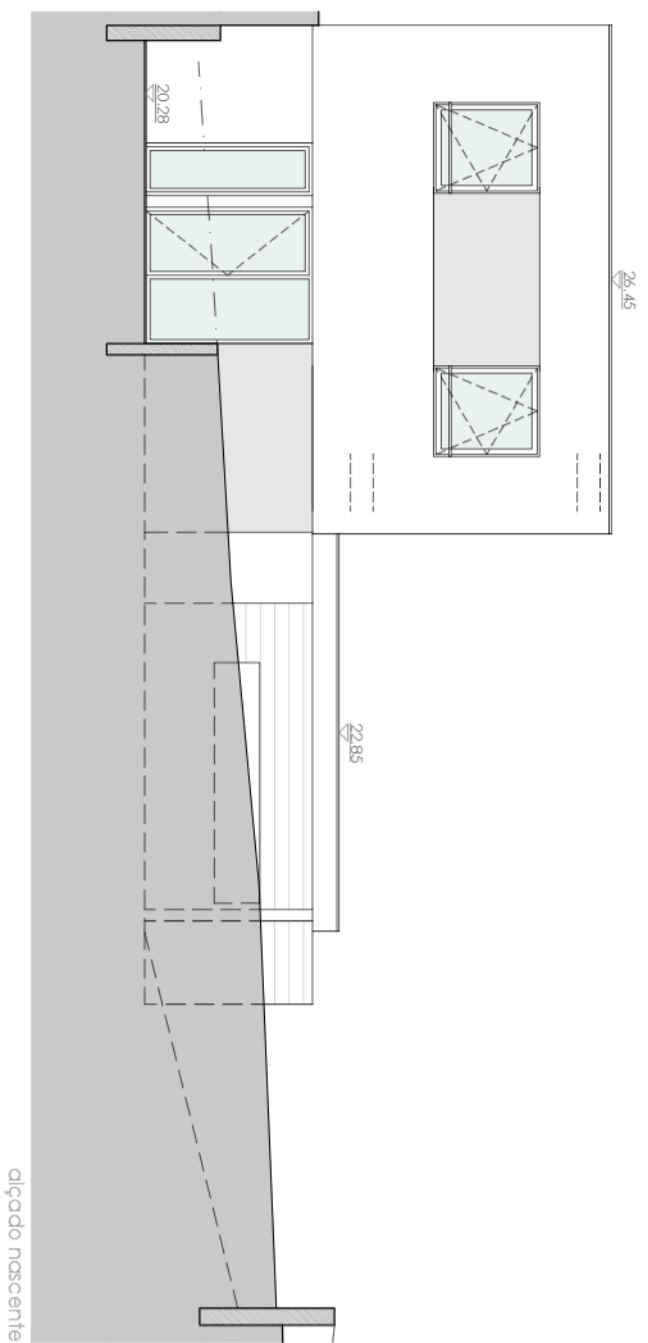
médias práticas, lda  
Construção Civil, Unipessoal, Lda



# CHIOMA

PERAFITA V2.2

habitação unifamiliar  
tipologia T3



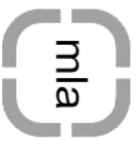
esc 1:100

# 03

setembro 2019

ARQUITECTURA

fernando lalça



miguel lima amorim

CONSTRUÇÃO



Mediomas Práticas, Lda  
Construção Civil, Unipessoal, Lda

